

M-Base News No. 27, Feb. 2004

Material Data Center will be continued

As announced some months ago, M-Base developed the new information system "Material Data Center" in a joint project with Omnexus.

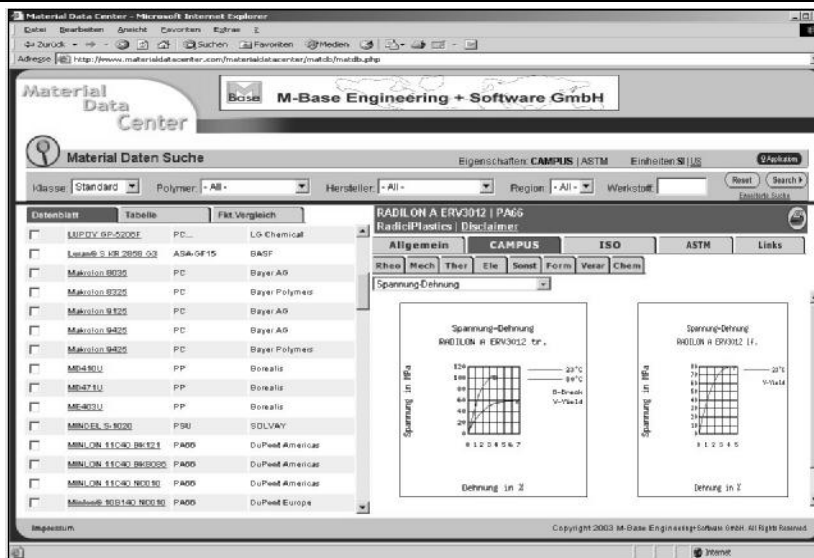
The product was successfully offered on the Omnexus platform worldwide. To our regret, Omnexus had to suspend their business and the internet platform at the end of November 2003. Despite Omnexus' short term decision, we succeeded in transferring the Material Data Center onto another server and in keeping it accessible without interruption. In the future the system will be **maintained by M-Base** without any cutbacks, existing license agreements will remain fulfilled.

The new address of the Material Data Center is:

www.materialdatacenter.com

The Material Data Center offers a plastics database with a functionality, competitionless in the internet, which masters any search for technical criteria, individual table views, multi-point data inclusive curve overlays of different materials, and textual information in several languages. The complete set of **CAMPUS** data is available for the user. Beyond that, the system is filled with material data by **ASTM** standard for the US market. Of course, the system is strictly watched not to make any wrong comparisons between data of different origin.

M-Base
Engineering + Software GmbH
For more information:



The Material Data Center

The Material Data Center also includes an **application database** in which numerous application examples are documented. The user has the option to search applications for name, industrial sector, and used material. An interface offers direct linking from an application to the data sheet of the used material and vice versa. It turned out that this kind of knowledge about successful application cases of materials is an extremely helpful additional information for **decision makers** and that it can improve the quality of material decisions considerably.

For the near future, it is planned to extend the Material Data Center by functions for plastics engineering, in detail, modules for cooling time calculation, flow length calculation and determination of material parameters

for different rheological and mechanical material models.

We also will gradually add different modules for the mechanical design with plastics, like snap-fit calculation and calculation of creep effects. For the creep calculation we will use new material models, which were developed based on the isochronous stress-strain diagrams from CAMPUS.

The annual access fee for the Material Data Center amounts to 350,- Euro. In the introduction phase, until February 29, 2004, we offer a special price of 290,- Euro.

Under www.materialdatacenter.com a demo version is available, also order forms can be downloaded from there.

Dennewartstr. 27
D - 52068 Aachen
www.m-base.de

Tel.: +49-241-963-1450
Fax: +49-241-963-1469
e-mail: info@m-base.de